



Aug - Sep  
2017 Edition

### In this edition, you'll find:

- Message from the Chairman
- 'A Sense of Place' – Post Production Review
- Fund Raising
- 'A View from the Bridge' Update from Ralf Togneri
- Kevin Awards 2016/17 – nomination information
- 'On Golden Pond' – NEWS!
- Rehearsed Readings –info !
- After-Show Parties – NEW RULES
- Dates for your diary
- David Higson Charity Evening

### Kelvinites,

It's time for another edition of your favourite theatrical newsletter. We apologise for our tardiness this month – June and July seem to have slipped away and suddenly we're nearly half way through the year! And what a great half of a year it has been for Kelvin.

Please enjoy the snippets inside written by your fellow members, and let's make the second half of 2017 just as good for Kelvin.

We would love to hear your suggestions, comments and ideas for future editions, so please email us at [jester@kelvinplayers.co.uk](mailto:jester@kelvinplayers.co.uk)

Lucy and Roger



CHARITY NO 294367

[WWW.KELVINPLAYERS.CO.UK](http://WWW.KELVINPLAYERS.CO.UK)



## From the Keyboard of the Chair's Desk...

Hello and welcome!

That was one helluva production. Congratulations to all involved in *A Sense of Place*. Josh and his team both on and off stage worked long and hard to create an amazing piece of theatre. All aspects of the production were professional and focussed. I'm very proud of the production and the company that can put on such a difficult work in such a professional way. If you missed it, why? As a member of the company you hope to be involved with productions and would, I hope, expect members to come and see it. Even if you don't think it'll be your cup-of-tea that's not a reason not to support your club and your fellow members.

Ralf, has now cast *A View from the Bridge* and rehearsals are underway. I would imagine there'll be a break over the summer. This is going to have a two-week run in October so get your tickets now. Did you know that as a member you get a concessionary price for your ticket (not on all tickets you book). All you need to do is select that you need a concessionary ticket on Ticketsource when booking to pay £10 rather than the undiscounted £12.

**STOP PRESS!!!!** If you or anyone books before 17<sup>th</sup> September you'll be able to get an Early-Bird booking price of only £9.00. Woohoo! As my old boss, Fred Pontin used to say, 'Book Early!'

Plans to develop the Wesley Road area of the building are coming to fruition. As a result of a very generous member pledge, we are hoping to start building works soon. I hope you'll start to notice changes outside. I may be sending out a Digest asking for help to start demolishing part of the wall by the pavement over summer! However, we still need to raise funds (see inside). This is your club and it's important that you feel part of the plans to develop it.

As we wind down for summer, some of us will continue working to develop the company and its premises.

The AGM is approaching. You'll soon be receiving your invitation to come along on 24<sup>th</sup> September. In the meantime, with our last production of the club year behind us, you can now start making your nominations for our version of the Oscars, rewarding those who have done particularly well over the year. See inside for more details.

As always, lots to look forward to, lots to keep us busy, lots of Rehearsed Readings coming up (See inside)

Get involved, get busy, get happy!

**Jonny Wilkinson**

**Chairman**

[chair@kelvinplayers.co.uk](mailto:chair@kelvinplayers.co.uk)



## ***A SENSE OF PLACE – ALL THIS IS DUST!***

After 8 months of planning and rehearsing A Sense of Place has been performed and I couldn't be prouder of the work of everyone involved or the final result.

Firstly, I'd like to thank my actors who threw themselves into the process from day one despite not knowing what the play would be. They were especially open to the physical theatre exercises and ideas which played such a huge part in the workshops and the final piece and they crafted large sections of these sequences in the final production so thanks to all of them.



Our technical crew were all committed and skilled as is usual in Kelvin productions with too many people to mention here, although I must give special thanks to Bronwen for her set design and creating the "fossil" and Neil for his tireless work on the lighting and the amazing projection imagery which added such a visual flourish to the show.



I must also thank my production manager Nicky, who started off as an assistant director and took on more and more whilst always remaining creatively involved. Special thanks to our dramaturg Tim Whitten who crafted the script and the overarching narrative with such rigour and purpose whilst also incorporating the physical sequences into a coherent storyline.

Finally, a huge thank you to all the audience members who came to see the show, we had good audience numbers throughout the week for a new and experimental piece. We also had great responses from people as well as fair constructive criticism at times, but the overall feedback was very positive. Without audience commitment these kind of shows don't get very far, so I'd like to thank the membership for coming to see the performance. Even those who didn't enjoy the style of the play said it was a brave project and worth doing.







My aim to introduce the concept of the Devising process to the club has worked very well and I feel I have started to train up a good mix of old and new members in a range of new techniques which is what I wanted to be the fruit of the project.

As I said at the after-show party, non-professional theatre should be ambitious, should be challenging and should be entertaining. I take the fact that some people didn't like aspects of the play as a positive as they had strong opinions and were not apathetic which shows audience engagement, and I'm aware this style of performance is not everyone's cup of tea. I must take this opportunity to thank the APC and the management committee for programming this production and allowing my vision to take shape.

I'll leave the final word with professional critic Kris Hallett who writes for What's On Stage and came to see the play in a non-working capacity, as he had directed Tim in another show recently. His thoughts?



**“Who said amateur work is safe and cosy – this is a group prepared to scale mountains.”**

**Joshua Cooper  
Director**



# It's all about the Money, Money, Money

So the Challenge is on. We've got planning permission and we've got quite a bit of money, thanks in part to a very generous pledge from Phil Joyner. However, to enable us to pay for the whole complete works of building a swanky new public entrance/extension to our lovely old building we need to raise more.

The total cost of the extension will be in the region of £34,000, that includes us members doing work as well. Taking away the money we had squirrelled away through Denise's excellent management of our accounts, utilising surpluses from recent productions and adding Phil's pledge we were left with a shortfall of £10,000.

So, I am asking you all, as Members, as Associates, as Friends to help us raise £10,000 to give us sufficient funds to enable us to get the work done as soon as possible. As mentioned elsewhere we're hoping to be able to have the work completed by Christmas.

It may be that you're able to make a one-off donation to the development fund. Any donations, however large or small would be very much welcome. If you're a tax payer, you would also be able to Gift Aid the donation then we can increase the amount given by a further 20% so for every £100 donated we can reclaim £20 from the Government. Most of you already do this with your membership subscriptions.

An alternative, if you have some money available but can't just give it away, would be to make us an interest free loan. That way, we get the money to use to get us across the line but then you'd get the money back over a period of time.

Cheques can be sent to Denise Jones, Treasurer, Chain Croft Cottage, Blackhorse Lane, Easter Compton, BS35 9RJ

Or you can make payment by BACS. Please make your payment to the following account:

**Lloyds Bank plc;    Sort code: 30-99-38    A/C no. 02923749    A/C name: Kelvin Players**

Reference: "Building [then your Initial & Surname]" (to ensure we can identify your payment on the statement)

In addition, we need to get in to Fund Raising mode. I'm looking for people to come up with ideas and follow through with fund-raising ideas. These could include:

- A ceilidh (like those to celebrate Richard Newman's nuptials)
- A quiz night
- An auction
- Somebody may have experience of Crowd Funding

To be honest, I have no time, personally to organise everything so I'm calling on you all to do your bit, or anyone else's bit to help pay for this exciting new development to the Kelvin building.

Please help.

**Jonny  
Chair**



## A VIEW FROM THE BRIDGE

**Ralf Togneri**  
**Director**

By the time this goes to press, casting will be complete. I never cease to be amazed at the depth of talent in Kelvin. The main roles could have been cast three times over and any of those who auditioned would have delivered a great show. But decisions have to be made and some disappointed. That has been the hardest part of the play so far – having to let very good actors know that I have not selected them. So thanks to all who auditioned.

The two week run has made it awkward for some to fit the run of the play into their working lives and reluctantly they have had to stand down. That is the reality of being in a non-professional theatre group – other things can get in the way.

The play is set in Red Hook, a part of Brooklyn, populated by mainly Italian immigrant labour, many of whom work on the waterfront doing heavy, hard manual labour for not much money. Poor financially but rich in the strength of family and the community around them. To get the accent right Gary Owsten has done two excellent sessions with the cast on Brooklynese – now they are off until the end of August learning their lines with the distinct Red Hook accent.

Chrissie Fryers has measured most of the cast and costuming is underway, while Bronwen Grover has engaged the master- builder Jonny



Wilkinson to build her set for the play. Teri Mohiuddin has been managing the processes and drawing up our schedules and keeping me on my toes. I know she is still looking for her backstage and production team. If you are interesting, willing and able to do so, get in touch with her and I'm sure she will find you a role in this amazingly intense play.

The poster is already on show outside the Studio, flyers are printed awaiting distribution, Sam Grayston is sorting out the publicity and social media side of things.

The play runs over two weeks from 11<sup>th</sup> October until the 14<sup>th</sup> and again from the 18<sup>th</sup> until the 21<sup>st</sup>. Don't forget the Early Bird Tickets (a Kelvin First)!

I just love it when a plan comes together!

**Ralf Togneri**  
**Director**

# Kelvin Players Annual General Meeting

## Award Nominations 2016-2017

All members of Kelvin Players are invited to nominate candidates in a Kelvin Players Theatre Company production. Awards to be presented at the Annual General Meeting on 18 September in the following categories:

- **THE MILTON JOHNS AWARD for BEST MALE ACTOR IN A MAJOR OR LEADING ROLE.**
- **THE HIGSON AWARD FOR BEST FEMALE ACTOR IN A MAJOR OR LEADING ROLE**
- **The VICE-PRESIDENTS' CUP for BEST SUPPORTING PERFORMANCE**
- **THE KELVIN AWARD FOR BEST DIRECTOR**
- **The HARRISON AWARD for TECHNICAL ACHIEVEMENT**

The following productions were presented during the 2016-2017 season, the casts and crews of which are eligible for nomination for these awards:

- ***A Sense of Place*** – *Devised by the Kelvin Players – Directed by Joshua Cooper*
- ***Dinner*** by Moira Buffini – *Directed by Tessa Garrett*
- ***The Beaux' Stratagem*** by George Farquhar – *Directed by Martin Walsh*
- ***Noel Coward's Brief Encounter*** Adapted by Emma Rice – *Directed by Mary McCallum*
- ***Charles Dickens' A Christmas Carol*** Adapted by Neil Bartlett – *Directed by Robin Turner*

For a reminder of who was in each production, please have a look at Past Productions on the Kelvin Members' website [www.kelvin-members.co.uk](http://www.kelvin-members.co.uk) \*

**Nominations must be submitted by Thursday 7 September 2017 at the latest to Jonny Wilkinson, Chairman.**  
**Email:** chair@kelvinplayers.co.uk **Post:** Jonny Wilkinson, Chairman, The Kelvin Players Studios, 253b Gloucester Road, Bishopston, Bristol, BS7 8NY

I wish to make the following nominations:

**1. The Milton Johns Award for Best Male Acting Performance:**

Production ..... Name of Actor .....

**2. The Higson Award for Best Female Acting Performance:**

Production ..... Name of Actor .....

**3. The Vice-Presidents' Cup for Best Supporting Acting Performance:**

Production ..... Name of Actor .....

**4. The Kelvin Award for Best Director**

Production ..... Name of Director .....

**5. Harrison Award for Technical Achievement:**

Production: .....

Area of achievement: Set Design / Set Dressing / Lighting / Sound / Special Effects / Costume

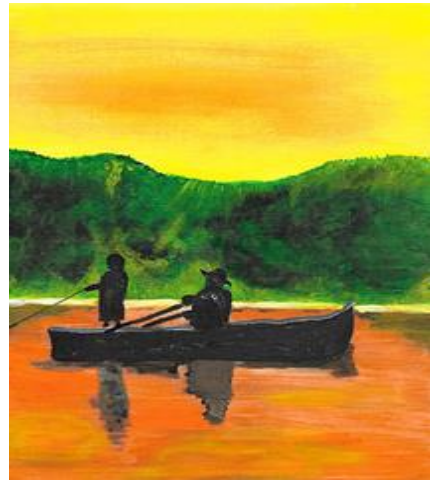
Your name: ..... Date: .....

The Management Committee would like to thank you for submitting your nominations.

\*Password required. If you've forgotten the password please email web@kelvinplayers.co.uk



# ON GOLDEN POND



## Some information from Sue Stobbs - Director

The 'pitch night' for *'On Golden Pond'* has been organised for ***Tuesday 22 August at 7.30pm*** in the Morris Room.

All members who are interested in taking an active part, either on stage or off stage, are welcome to attend this meeting. I will be discussing the various technical roles that I am looking to fill, the characters in the play and the synopsis of the story.

The read-through of the play will take place on ***Sunday 10th September at 7.30pm*** in the Morris Room, with auditions for the adult characters on ***Tuesday 12 September and Thursday 14 September*** in the Morris Room at 7.30pm.

I am looking for a young male person aged between 12 – 14 to play the role of Chelsea's stepson in the play. Auditions for this part, as well as any call backs from earlier auditions will be on ***Sunday 17 September from 2.00pm***.

Rehearsals will commence on ***Tuesday 26th September*** (twice weekly) with a two week break during the ***'View From A Bridge'*** production (9-21 October), and then will re-commence on ***Monday 23 October*** rehearsing on a Monday and Wednesday at 7.30pm and Sundays at 2.00pm at the studios.

**The script and rehearsal schedule is on the members' web site for anyone that is interested.**





# Rehearsed Reading Update **Rick Proctor**

**Dearest Kelvinians,**

Well then - just before everyone sets off on their summer holidays far and wide, we managed to have a most splendiferous Rehearsed Readings Launch Night on 22nd July. We therefore now have a new half-year's worth of RRs all cast and ready to go, so get your diaries out folks - here are the all-important dates you'll need, to come along to and support your lovely Kelvin RR directors and actors strutting their theatrical stuff. As is usually the case, every RR comprises a double-bill - and so follows the names of each pair of directors for each evening. Watch this space (well, watch the Digest email and Facebook) for further details of what each director is presenting nearer the time...

## **2<sup>nd</sup> September**

Jonny Wilkinson  
Simon Shorrocks

## **16<sup>th</sup> September**

Mat Rees  
Sam Skelton

## **28<sup>th</sup> October**

Writers Group  
Ralf Togneri

## **25<sup>th</sup> November**

Ben Culverhouse  
Kristian Baxter & Rachael Lane

On every one of these evenings (all Saturdays as always) doors and bar will open at 7.00pm, ready for the proverbial 'curtain up' at 7.30pm – so please do come along, enjoy the shows and soak up that wonderfully friendly, unmistakably 'Kelvinial' social atmosphere. Further news of the next launch night and RR dates into 2018 should emerge in the next edition of the Jester, following the AGM – but in the meantime, as I say, get yourselves to Kelvin on those 4 evenings and have a luscious RR time of it all.

See y'all there!!

**Rick Proctor**  
**RR Organiser**  
**07941 878460**  
**[Rick.proctor@icloud.com](mailto:Rick.proctor@icloud.com)**

---

**It is with sadness that we have learned of the death of Chris Gonet, former member and long-time friend of Kelvin. People may remember him from such productions as Siva Dancing (1995) and Inherit the Wind (2000).**

---

## New Rules for After Show Parties

Sadly, there have been complaints and even worse the complaints are justified. A complaint has been made that at a recent After-Show-Party in the studio neighbours have been disturbed by members partying at 3:30 in the morning. This is not acceptable behaviour.

In the 'olden days' we would often stay for a drink in the bar but then adjourn to another venue like someone's house to party on till the early hours. That was in the days before 24-hour pub licensing, so more opportunities now.

We did try the softly, softly approach to regulating late night use asking people to be reasonable and respectful but sadly that doesn't seem to work for some.

We as a company cannot allow this disrespectful behaviour towards our neighbours and our community to continue and what had previously been a relaxed 'behave yourselves' will now have to be embodied in theatre use 'rules'.

I regret therefore that in future, Duty Theatre Managers will be asked to enforce our responsibilities to our neighbours and that:

- Once the public have left the building, the Wesley Road door should NOT be used by company members. If they want to go outside for some fresh air (contrarily) for a smoke they should use the Gloucester Road entrance ONLY.
- All parties must be finished and the premises vacated by 12:30 a.m. at the latest. The Duty Manager may then secure the premises and leave via Wesley Road door.
- The Duty Manager should not pass responsibility for locking up to anyone else. With a 12:30 finish this is not too much to ask.
- Under no circumstances should people be allowed to sleep overnight in the premises.

There may be serious consequences for the Company for failure to observe these new Rules including insurance issues and the potential threat of loss of our theatre licence.

If there is an obviously disregard for these new rules, the committee may need to consider appropriate action against identified individual members.

**Jonny Wilkinson**  
**Chair**



## Please note the following dates for your KELVIN Diary

### August 2017

<b>Tue 22nd</b>	<b>Launch Night for 'On Golden Pond' by Ernest Thompson</b> Director – Sue Stobbs	The Morris Room 7.30 pm
-----------------	--	----------------------------

### September 2017

<b>Sat 2<sup>nd</sup></b>	<b>Rehearsed Readings Performances</b> 7.00pm Bar opens – 7.30pm performances commence	The Studio Theatre
<b>Thur 7<sup>th</sup></b>	<b>FINAL DAY for Kelvin 2016/17 AWARDS NOMINATIONS</b>	
<b>Sun 10<sup>th</sup></b>	<b>'On Golden Pond' – Read Through</b>	The Morris Room 7.30 pm
<b>Tue 12<sup>th</sup></b>	<b>'On Golden Pond' – Auditions</b>	The Morris Room 7.30 pm
<b>Thur 14<sup>th</sup></b>	<b>'On Golden Pond' – Auditions</b>	The Morris Room 7.30 pm
<b>Sat 16<sup>th</sup></b>	<b>Rehearsed Readings Performances</b> 7.00pm Bar opens – 7.30pm performances commence	The Studio Theatre
<b>Sun 17<sup>th</sup></b>	<b>'On Golden Pond' – Auditions &amp; Call Backs</b>	The Morris Room 2.00 pm
<b>Sun 24<sup>th</sup></b>	<b>AGM 7.30 prompt</b>	The Studio Theatre
<b>Tue 26<sup>th</sup></b>	<b>'On Golden Pond' – Rehearsals commence</b>	The Morris Room

# ***David Higson Charity Evening***

## **Three Men's Company (3MC)**

*(John D Barham, Dr John Marsh and Jeremy Watkins)*

Present an evening of

### **Dave's Faves**

Music, Entertainment, Supper and Auction  
In support of the David Higson Memorial Fund  
to benefit St Peter's Hospice

**Saturday 18<sup>th</sup> November 2017**

To commence at 7.00pm for 7.30pm  
At the Kelvin Players Studios, 253b Gloucester Road

**Tickets £20.00 (limited to 80)**

David, who died earlier this year, was cared for in his final days at St Peter's Hospice, for many years he performed as a witty raconteur for 3MC, the group having raised many thousands of pounds for charities over the years.

To support St Peter's Hospice further, an auction will be held on the night to raise additional funds (cash or cheques please).

Tables of 10 can be booked, tickets available from Denise Jones, Tel: 01454 632797

Email: [richden@btinternet.com](mailto:richden@btinternet.com)

Tickets for the above must be purchased in advance and are strictly limited to 80 (8 tables of 10). You can book individual tickets or make up a table.

If you would like to donate an auction prize, or if you could help with the setting up on the Saturday afternoon, please contact me on the above telephone number or email address.

Richard Jones